

# Inlays and Onlays



Tooth coloured inlays and onlays can be used to replace your existing mercury amalgam fillings or to restore severely broken down teeth. They can be made in a mercury free material which is very strong, long lasting and can accurately match the colour of your own teeth. Each filling is crafted under near ideal conditions outside the mouth by a highly skilled laboratory technician, making the result more detailed, hard wearing and easier to keep clean than a filling made in your mouth.



Though these inlays are not as strong as conventional gold inlays, they can last many years.

If you feel self-conscious smiling broadly or laughing out loud because you have dark, unattractive old fillings, then these inlays or onlays are an ideal alternative to conventional fillings.

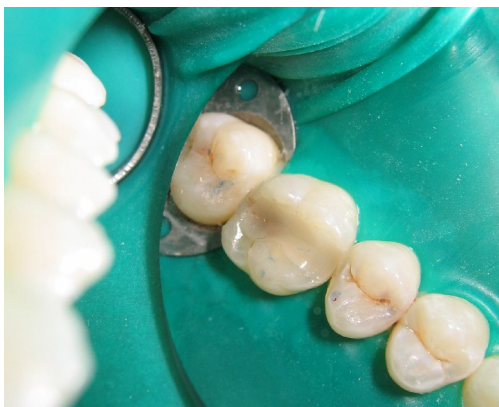
*Tooth  
coloured  
solutions  
to  
replace  
large  
amalgam  
fillings*

Gold Inlays are ideal solutions when the strength of your bite is such that an even stronger, longer lasting solution is required - this particularly being the case on your very back teeth - though luckily these often do not show when you smile.

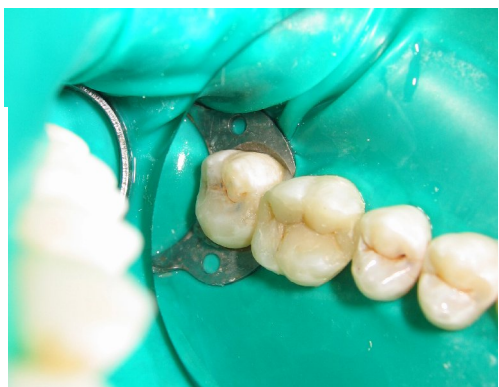
**Making your teeth look good makes you feel confident.  
And that's all part of being healthy.**



# White Fillings



Tooth Coloured Fillings made of a material known as a composite are great at repairing small to medium sized cavities in teeth. Modern composite materials, which have been reinforced with ceramics allow us to repair these defects with greater predictability than before.



Composite filling materials are set with a light so that they are immediately ready for use. While, these white fillings are not as resistant to staining and not as strong as inlays, onlays or crowns, they are the treatment of choice in moderate cavities. At Stanhope Place Dental Practice, we use composite fillings with the aim to recreate the form and function of a damaged tooth. In this way we always produce much more superior results compared to other practices.

When teeth are damaged in a more severe manner, simple tooth coloured fillings may not be the best way to restore them to their former beauty and strength. Inlays, onlays, crowns and veneers may be the most suitable restoration to place to make your tooth comfortable and last a long time. These types of restorations, made by a master ceramist in a dental laboratory, are harder and more durable than simple white fillings.

*Our artistry of composite fillings will repair moderately damaged teeth with natural looking materials*

**Making your teeth look good makes you feel Confident. And that's all part of being healthy.**

